



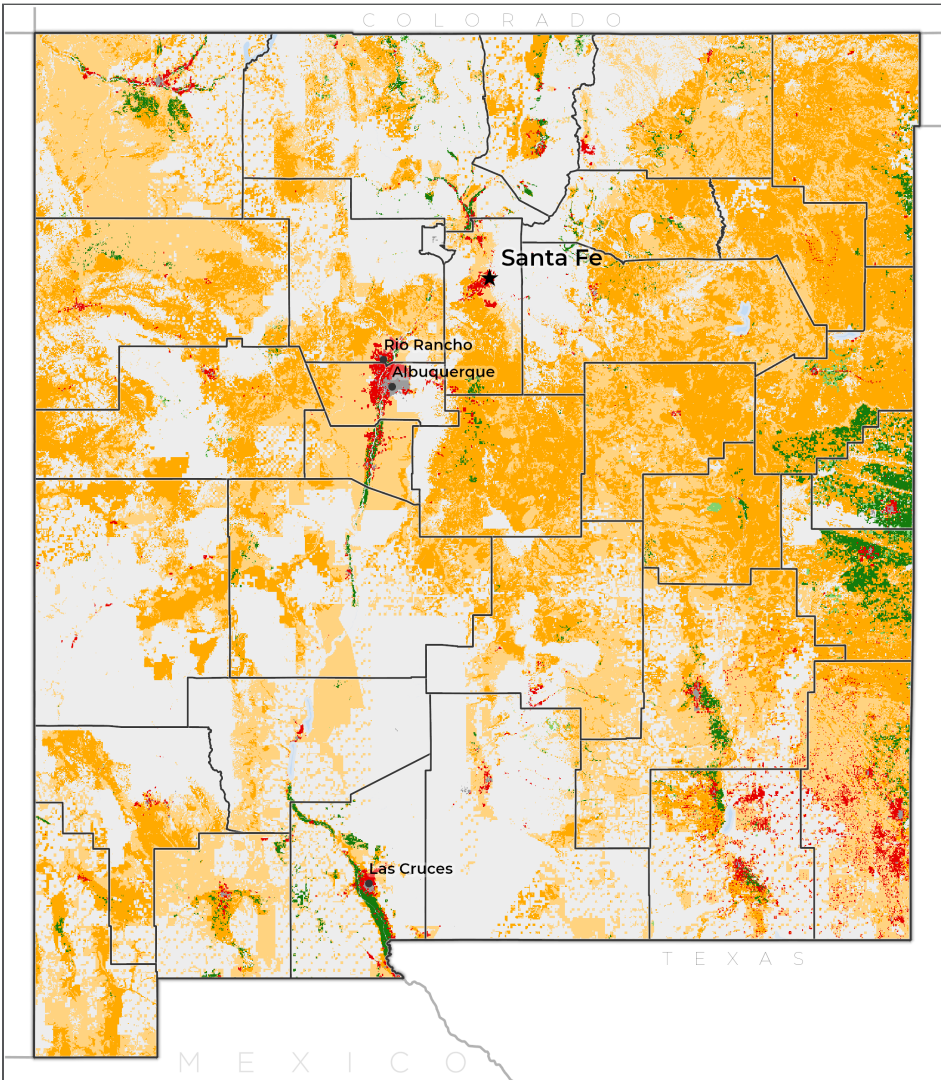
# THE STATE OF THE STATES

Agricultural Land Conversion Highlight Summary

# New Mexico

**Farms Under Threat: The State of the States** mapped agricultural land conversion and evaluated state policy responses. The spatial analysis identified the extent, diversity, and quality of each state's agricultural land—and where this land has been converted to both urban and highly developed (UHD) and low-density residential (LDR) land uses.

## AGRICULTURAL LAND CONVERSION 2001-2016



Conversion of non-federal farmland and rangeland to UHD and LDR land uses from 2001-2016. The threat to working farms and ranches is pervasive, often claiming the most productive, versatile, and resilient lands.

Conversion of agricultural land to UHD and LDR land uses

Above state median PVR\*   
Below state median PVR

**Farmland\*\*  
Rangeland**

Urban areas  
 Federal, forest, and other lands

### RELATIVE CONVERSION THREAT

# LOW

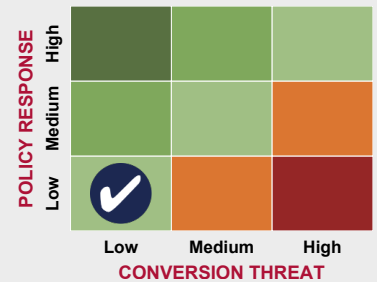
New Mexico scored among the lowest states for the conversion of agricultural land to urban and highly developed (UHD) and low-density residential (LDR) uses.

### RELATIVE POLICY RESPONSE

# LOW

New Mexico scored among the lowest states for policies and programs that protect agricultural land from development, promote farm viability, and facilitate the transfer of agricultural land.

### HOW IS THIS STATE DOING?



New Mexico is in a green box because its policy response is aligned with its conversion threat, relative to other states. Learn more at [www.farmland.org/farmsunderthreat](http://www.farmland.org/farmsunderthreat)

\*Our productivity, versatility, and resiliency (PVR) index helps identify high-quality agricultural land (see page 2).

\*\* Farmland is composed of cropland, pastureland, and woodland associated with farms.

## DEVELOPMENT THREATENS NEW MEXICO'S AGRICULTURAL LAND

From 2001-2016, 113,000 acres of agricultural land were developed or compromised.

New Mexico's farmland and ranchland was converted to:

- **Urban and highly developed (UHD)** land use, including commercial, industrial, and moderate-to-high-density residential areas.
- **Low-density residential (LDR)** land use, where scattered large lot development fragments the agricultural land base and limits production, marketing, and management options for the working farms and ranches that remain.

### LDR PAVES THE WAY FOR FURTHER DEVELOPMENT

Agricultural land in LDR areas in 2001 was

**94 TIMES MORE LIKELY**

to be converted to UHD by 2016, compared to other agricultural land.

53,300 acres

**47%**

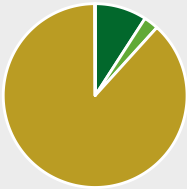
of conversion was to UHD

59,700 acres

**53%**

of conversion was to LDR

### CONVERSION AFFECTED ALL TYPES OF AGRICULTURAL LAND



**CROPLAND:** 10,300 acres  
**PASTURELAND:** 2,900 acres  
**RANGELAND:** 99,700 acres  
**WOODLAND:** 100 acres

## NEW MEXICO'S BEST AGRICULTURAL LAND IS UNDER THREAT

We used our unique **PVR index**, which quantifies the productivity, versatility, and resiliency of agricultural land, to identify:

1. **New Mexico's best land**, which has PVR values above the state median, and
2. **Nationally Significant land**, which is the country's best land for long-term production of food and other crops. **2%** of New Mexico's agricultural land, or **1,028,300 acres**, falls in this category.\*

Protecting high-PVR land is critical for the long-term sustainability of agriculture, yet from 2001-2016:

- ▶ **46,400 acres** of New Mexico's best land were converted to UHD and LDR uses.
- ▶ **2,900 acres** of New Mexico's Nationally Significant land were converted.
- ▶ Nationally Significant land in New Mexico was **11% more likely** to be converted than other agricultural land.

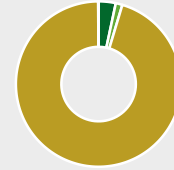
\*These two categories overlap and the same land may be included in both.



**Farms Under Threat** is American Farmland Trust's multi-year initiative to document the status of and threats to U.S. farmland and ranchland and to identify policy solutions to ensure the protection and conservation of America's diverse agricultural landscape. For more information about AFT, visit [www.farmland.org](http://www.farmland.org). If you have any questions about the analysis methods or would like access to data, please contact AFT's Farmland Information Center: [www.farmlandinfo.org](http://www.farmlandinfo.org) or (800) 370-4879.

## What's at stake?

- ▶ **43,863,000 acres of agricultural land remain<sup>1</sup>**



**CROPLAND:** 1,465,800 acres  
**PASTURELAND:** 569,800 acres  
**RANGELAND:** 41,791,000 acres  
**WOODLAND:** 36,400 acres

- ▶ **\$2.6 billion earned from cash receipts in 2017<sup>2</sup>**
  - \$134.9 million from local food<sup>3</sup>
  - \$761.7 million from agricultural exports<sup>4</sup>
- ▶ **113,000 acres were converted—enough land to generate \$6.7 million in annual revenue<sup>2</sup>**

- ▶ **New Mexico's top 3 agricultural products:<sup>2</sup>**

- Milk and Dairy \$1.3 billion
- Cattle \$626.7 million
- Fruit and Tree Nuts \$209.9 million

- ▶ **41,700 producers and 21,700 farm laborers on 25,000 farms<sup>2</sup>**

- ▶ **6 times as many producers over 65 as under 35 years old<sup>2</sup>**

1. Farms Under Threat 2016  
 2. National Agricultural Statistics Service 2017  
 3. Sold directly to consumer and intermediate outlets, NASS 2017  
 4. Economic Research Service 2017



Explore our interactive maps at [www.farmland.org/farmsunderthreat](http://www.farmland.org/farmsunderthreat)